

## Preciso Recalibration

All clock positions are in reference to the front of the grinder being 6 o'clock

Unplug the grinder

Remove the hopper by rotating counterclockwise until it lifts up and off the grinder

Remove the silicone seal

Remove the upper ring burr

Remove the grounds bin

Remove the micro adjust knob. Accomplish this by putting the knob at six o'clock, push down on the adjustment ring at six o'clock, and simultaneously stick the head of the flathead screwdriver in horizontally as pictured and pry upwards



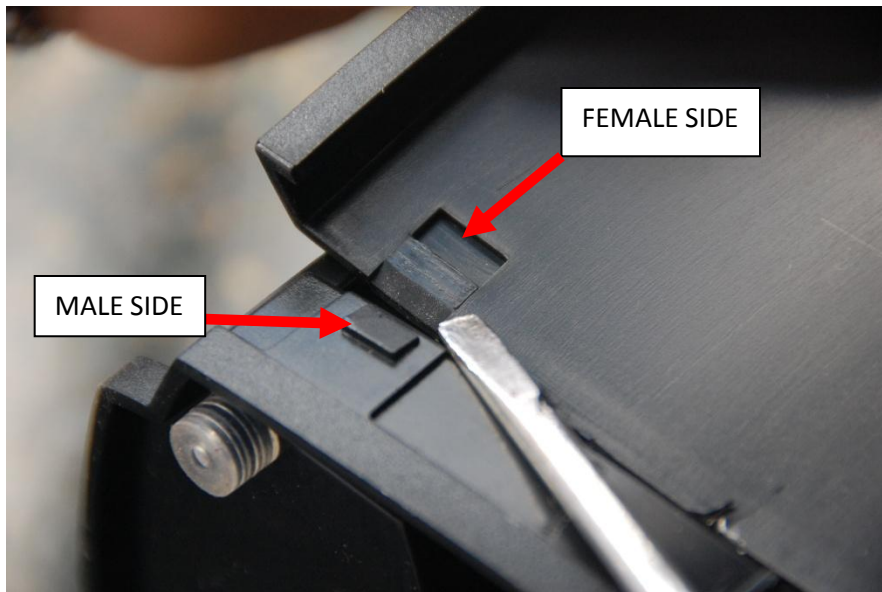
Remove the timer knob by pulling it straight off the grinder



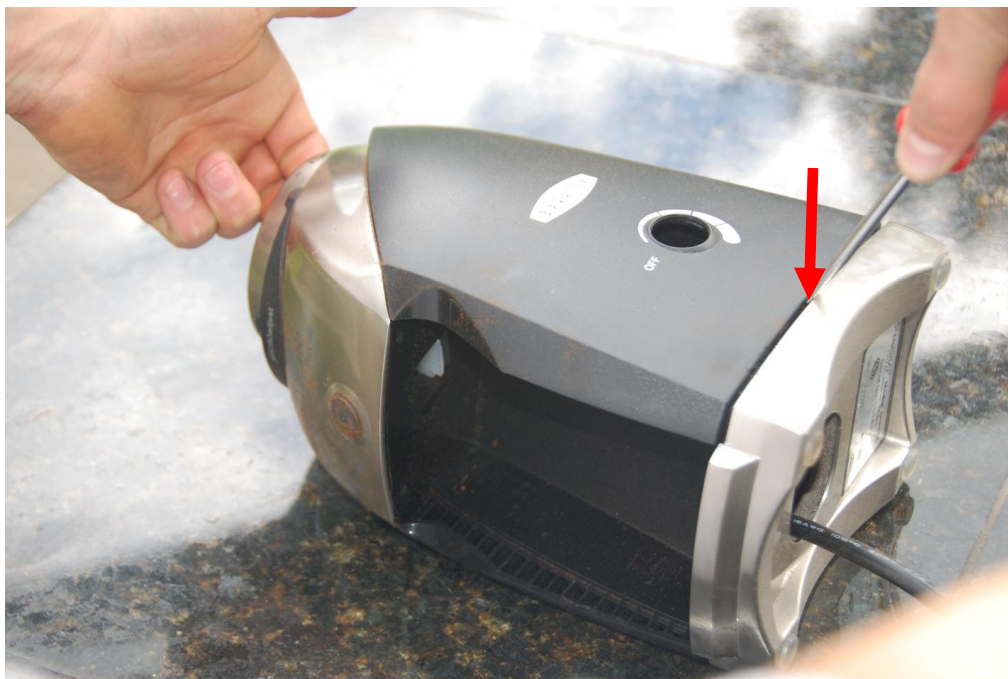
Put the grinder on its side, with the timer knob hole facing upwards

Removing the case is accomplished by separating the four case clips- two on each side of the grinder (example below)

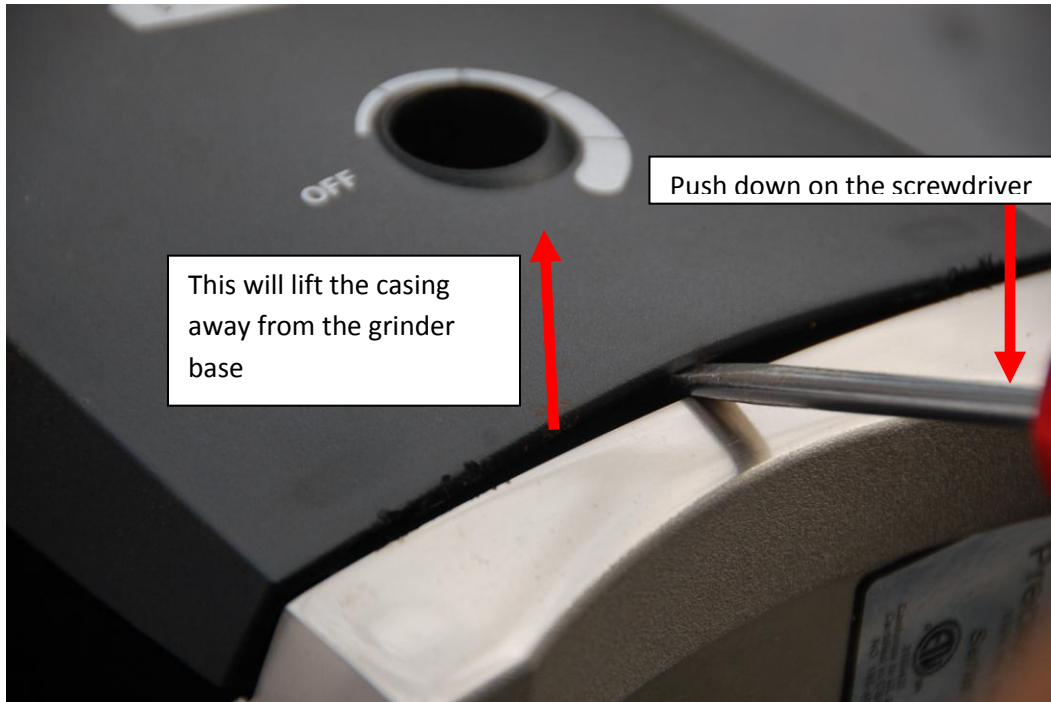
The grinder has the male side (below the screwdriver) and the case has the female side.



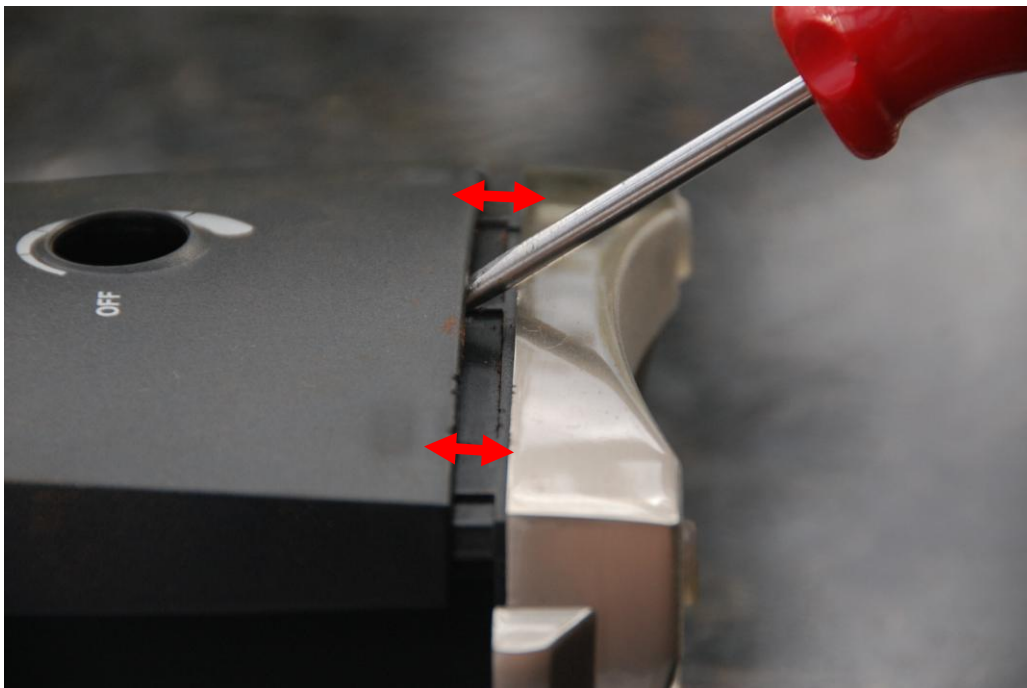
Start by wedging a flat blade screwdriver in vertically



Rock it back to catch the lip of the casing



Push the screwdriver ½ inch deeper into the crack, then pivot the screwdriver mildly upwards to force the case shell away from the base, while simultaneously using your free hand to pull up on the casing where the hopper usually sets. These two motions will free the clips, leaving a 1/2" to 1" space between the shell and the base.



Next, carefully roll the unit over to the other side without letting the 1<sup>st</sup> side clip back together and repeat this procedure. After you get the second side freed, the entire shell of the case will slide up and off the grinder.

