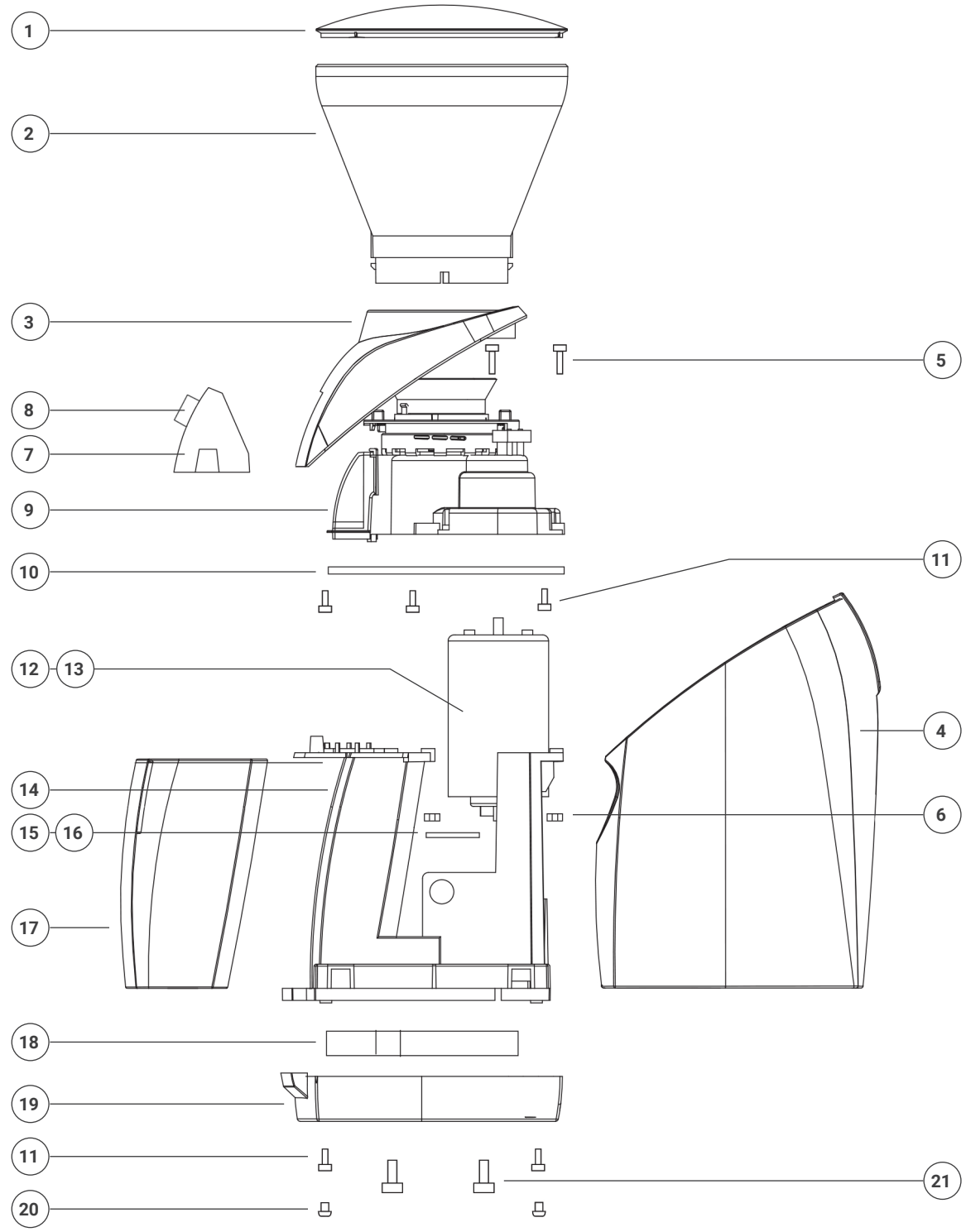




Virtuoso+

MAIN ASSEMBLY



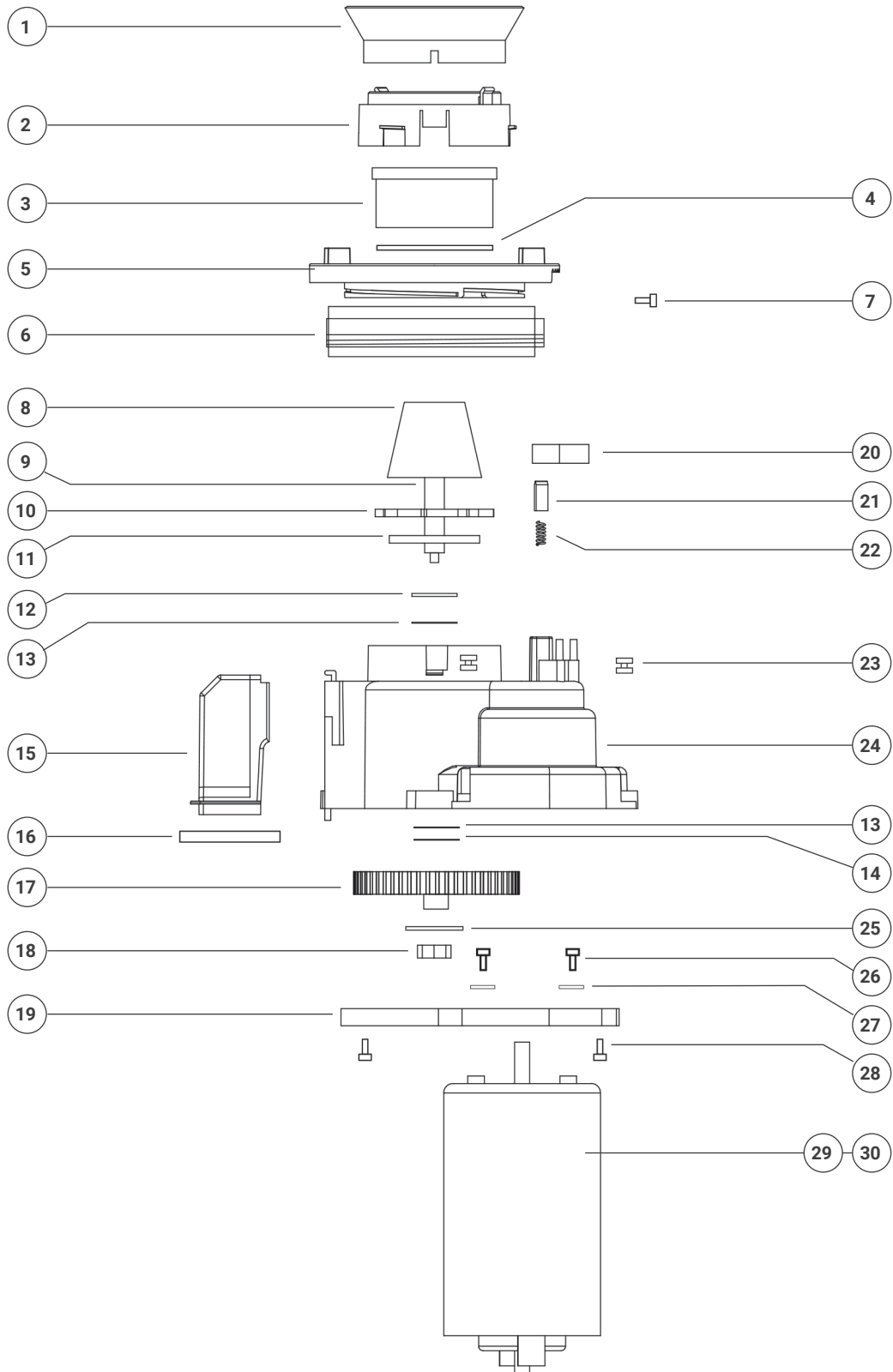
VIRTUOSO+ MAIN ASSEMBLY

Item Number	Part Number	Part Description	Total Used
1	1010*	Hopper Lid (Clear)	1
2	6111**	Hopper (Clear)	1
3	6214	Virtuoso+ Top Casting	1
4	6251	Virtuoso+ Rear Case (Left)	1
4	6252	Virtuoso+ Rear Case (Right)	1
5	F6119**	M3x20 Machine Screw	2
6	F6120**	M3 Hex Nut	2
7	6235	Virtuoso+ Display Assembly w/Dial & Lens Installed	1
8	6236	Virtuoso+ Dial (part of 6235)	1
NS	6237	Virtuoso+ Display Lens w/ adhesive backing (part of 6235)	1
9	na	Conical Gearbox Sub-Assembly	1
10	6094*	Conical Motor Plate	1
11	F6121	M3.5x11 Plastic Thread Cutting Screw	9
12	6026*	120v Motor	1
13	6027*	230v Motor	1
14	6035	Conical Chassis	1
15	6282*	Virtuoso+ 120v Power Supply Board	1
16	6283*	Virtuoso+ 230v Power Supply Board	1
17	6142	Conical Grounds Bin Clear w/Fill Line	1
18	6021	Ballast for Encore/Virt/Virt+/Preciso	1
19	6044	Metal Base (Virtuoso/+, Preciso)	1
20	6049*	Rubber Foot	4
21	F6122	M6-1.25x8 machine screw	2

** Frequently needed service parts

* Occasionally needed service parts NOTE: No need to stock parts without asterisks.

VIRTUOSO+ GRIND/MOTOR ASSEMBLY



VIRTUOSO+ GRIND/MOTOR ASSEMBLY

Item Number	Part Number	Part Description	Total Used
1	6066**	Silicone Gasket	1
2	6068**	Ring Burr Holder	1
3	6170*	M2 Ring Burr	1
4	6065*	Ring Burr O-Ring	1
5	6076**	Adjustment Ring	1
6	6077**	Calibration Ring	1
7	F6177**	M2x6 Self Tapping Screw	1
8	6175	M2 Cone Burr	1
9	6078	Drive Shaft	1
10 & 11	6380**	Paddle Wheel w/Felt	1
12	F6084*	M10-16mmOD, 1.50mm thick washer shim	1
13	F6086*	M10-16mmOD, 0.50mm thick washer shim	3
14	F6085*	M10-16mmOD, 0.25mm thick washer shim	1
15	6288	Virtuoso+ Grounds Chute	1
16	6089	Ground Chute Gasket	1
17	6091**	Main Drive Gear	1
18	F6192	M8 hex nut	1
19	6094*	Conical Motor Mounting Plate	1
20	6032*	Micro Switch	1
21	6196**	Detent	1
22	6197*	Detent Spring	1
23	6105*	Grommet Sleeve Assembly	1
24	6000	Conical Gearbox Housing (w/2 of 6105 Grmt Slv Asmb & detent spring)	1
25	F6193	M8 Internal tooth star lock washer	1
26	F6189	M5x12 Machine Screw	2
27	F6190	M5 external tooth star lock washer	2
28	F6121	M3.5x11 Plastic Thread Cutting Screw	4
29	6026*	120v Motor	1
30	6027*	230v Motor	1

** Frequently needed service parts

* Occasionally needed service parts NOTE: No need to stock parts without asterisks.