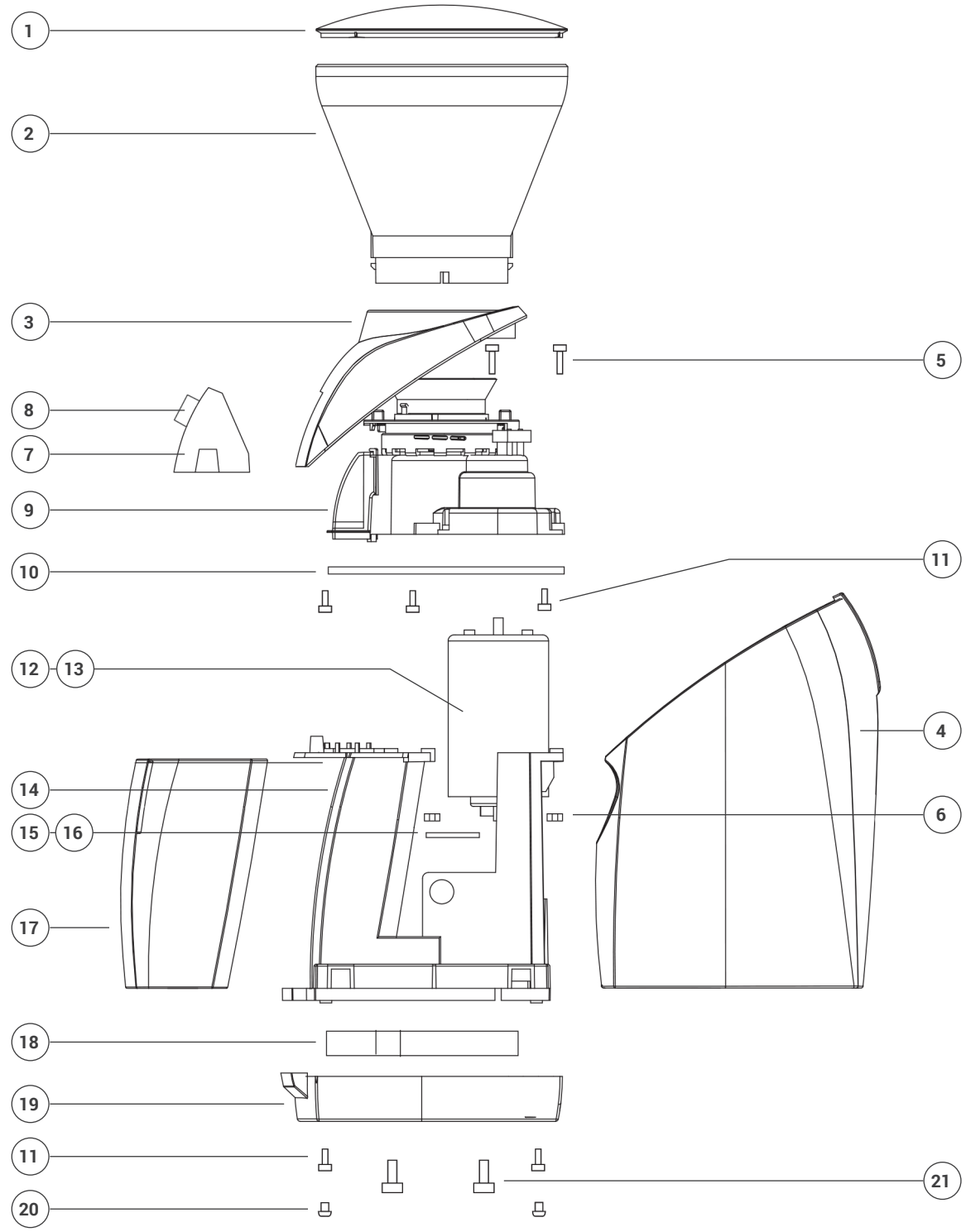




Virtuoso+

MAIN ASSEMBLY



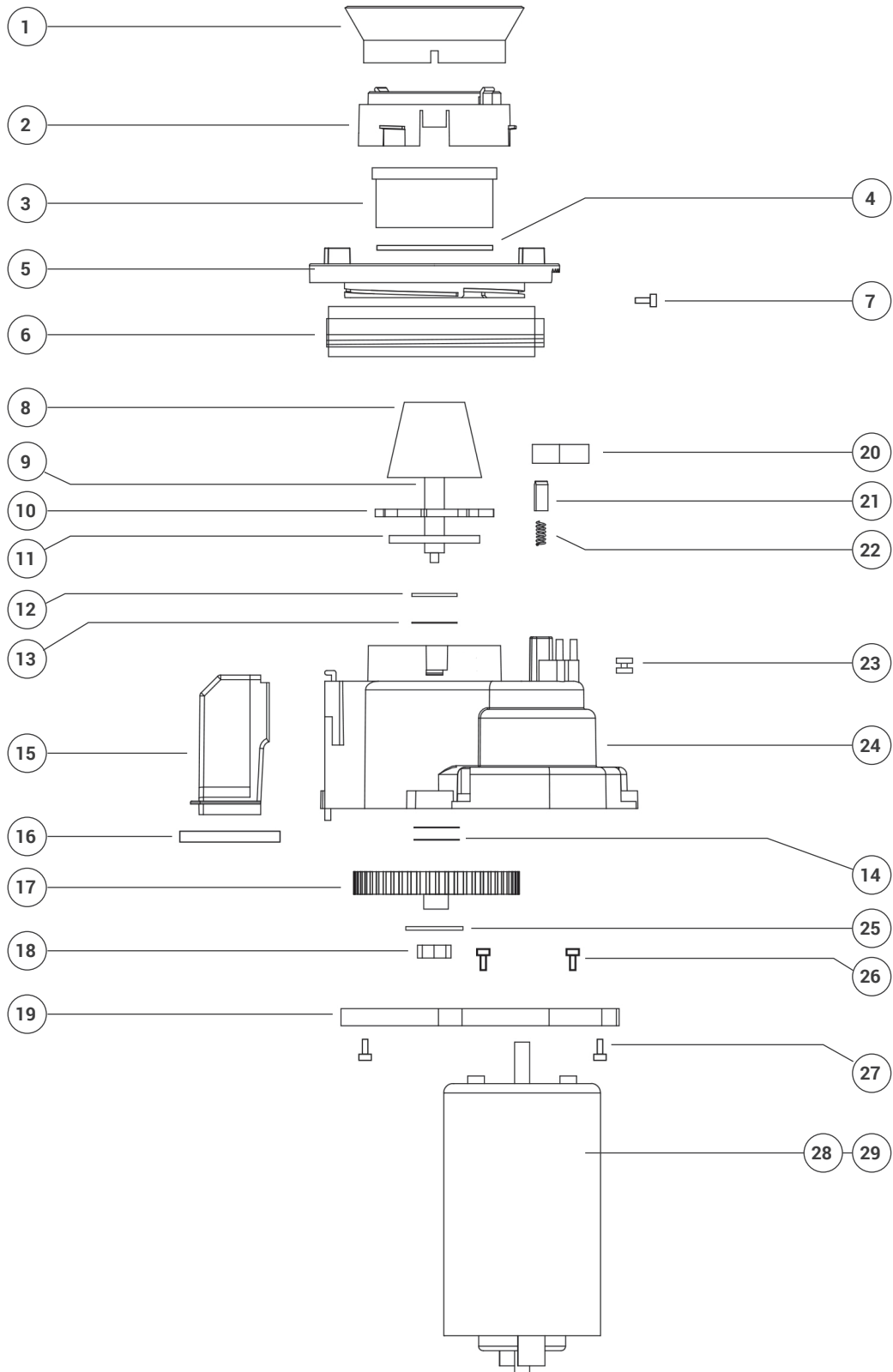
VIRTUOSO+ MAIN ASSEMBLY

| Item Number | Part Number | Part Description | Total Used |
|-------------|-------------|---|------------|
| 1 | 1010** | Hopper Lid (Clear) | 1 |
| 2 | 6111** | Hopper (Clear) | 1 |
| 3 | 6214 | Virtuoso+ Top Casting | 1 |
| 4 | 6251 | Virtuoso+ Rear Case (Left) | 1 |
| 4 | 6252 | Virtuoso+ Rear Case (Right) | 1 |
| 5 | F6119** | M3x20 Machine Screw | 2 |
| 6 | F6120** | M3 Hex Nut | 2 |
| 7 | 6235 | Virtuoso+ Display Assembly w/Dial & Lens Installed | 1 |
| 8 | 6236 | Virtuoso+ Dial (Knob) (part of 6235) | 1 |
| NS | 6237 | Virtuoso+ Display Lens w/ adhesive backing (part of 6235) | 1 |
| 9 | na | Conical Gearbox Sub-Assembly | 1 |
| 10 | 6094* | Conical Motor Plate (with bushing) | 1 |
| 11 | F6121* | M3.5x11 Plastic Thread Cutting Screw | 9 |
| 12 | 6026** | 120V Motor (Encore/Virt/Virt+/Preciso) | 1 |
| 13 | 6027** | 230V Motor (Encore/Virt/Virt+/Preciso) | 1 |
| 14 | 6035 | Conical Chassis | 1 |
| 15 | 6282* | Virtuoso+ 120v Power Supply Board | 1 |
| 16 | 6283* | Virtuoso+ 230v Power Supply Board | 1 |
| 17 | 6142 | Conical Grounds Bin Clear w/Fill Line | 1 |
| 18 | 6021 | Ballast for Encore/Virt/Virt+/Preciso | 1 |
| 19 | 6044 | Metal Base (Virtuoso/+, Preciso) | 1 |
| 20 | 6049** | Rubber Foot | 4 |
| 21 | F6122 | M6-1.25x8 machine screw | 2 |
| NS | F8029 | M3x12 Machine Screw | 4 |

** Frequently needed service parts

* Occasionally needed service parts NOTE: No need to stock parts without asterisks.

VIRTUOSO+ GRIND/MOTOR ASSEMBLY



VIRTUOSO+ GRIND/MOTOR ASSEMBLY

| Item Number | Part Number | Part Description | Total Used |
|-------------|-------------|---|------------|
| 1 | 6066** | Silicone Gasket | 1 |
| 2 | 6068** | Ring Burr Holder | 1 |
| 3 | 6170* | M2 Ring Burr | 1 |
| 4 | 6065* | Ring Burr O-Ring | 1 |
| 5 | 6076** | Adjustment Ring | 1 |
| 6 | 6077** | Calibration Ring | 1 |
| 7 | F6177* | M2x6 Self Tapping Screw | 1 |
| 8 | 6175* | M2 Cone Burr (Virtuoso, Preciso) | 1 |
| 9 | 6078 | Drive Shaft (Virtuoso) | 1 |
| 10 & 11 | 6380** | Paddle Wheel w/Felt | 1 |
| 12 | F6087* | M10-16mmOD, 2.5mm thick washer shim | 1 |
| 14 | F6085* | M10-16mmOD, 0.25mm thick washer shim | 3 |
| 15 | 6288 | Virtuoso+ Grounds Chute | 1 |
| 16 | 6089 | Ground Chute Gasket | 1 |
| 17 | 6091** | Main Drive Gear | 1 |
| 18 | F6192 | M8 hex nut | 1 |
| 19 | 6094* | Conical Motor Mounting Plate (with bushing) | 1 |
| 20 | 6032* | Micro Switch | 1 |
| 21 | 6196** | Detent | 1 |
| 22 | 6197* | Detent Spring | 1 |
| 23 | 6105* | Grommet Sleeve Assembly | 1 |
| 24 | 6000 | Conical Gearbox Housing (w/2 of 6105 Grmt Slv Asmb & detent spring) | 1 |
| 25 | F6193 | M8 Internal tooth star lock washer | 1 |
| 26 | F6189 | M5x12 Machine Screw | 2 |
| 27 | F6121 | M3.5x11 Plastic Thread Cutting Screw | 4 |
| 28 | 6026** | 120V Motor (Encore/Virt/Virt+/Preciso) | 1 |
| 29 | 6027** | 230V Motor (Encore/Virt/Virt+/Preciso) | 1 |

** Frequently needed service parts

* Occasionally needed service parts NOTE: No need to stock parts without asterisks.