

ENCORE ESP MAIN ASSEMBLY

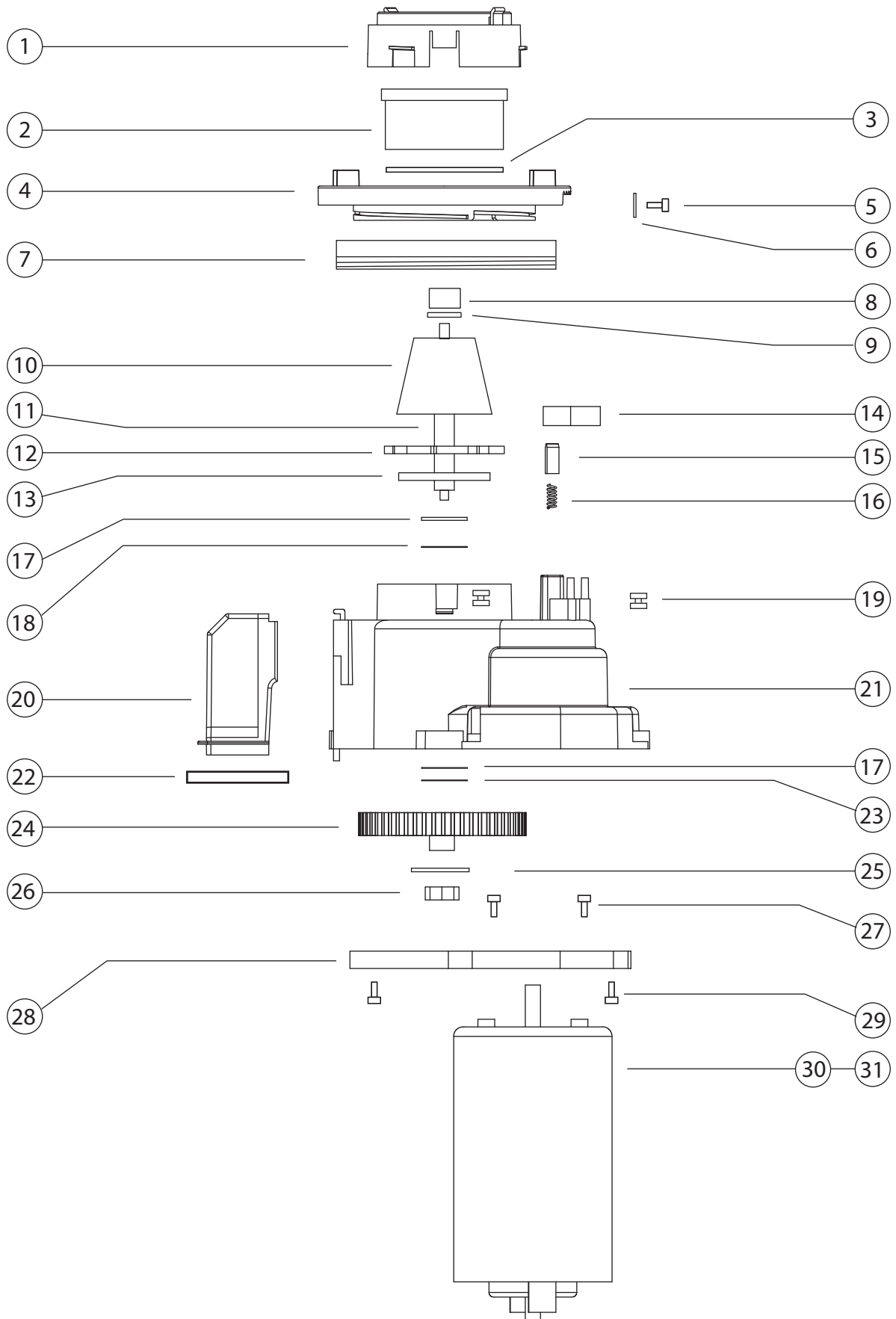
Item Number	Part Number	Part Description	Total Used†
1	1010**	Hopper Lid Clear	1
2	6111**	Hopper Clear	1
3	6766	Shortened Hopper Gasket	1
4	F6119*	M2x20 Machine Screw	2
5	N/A	ESP Gearbox Sub-Assembly	1
6	6026**	120v Motor for Conical Grinders	1
7	6027**	220v Motor for Conical Grinders	1
8	6032*	Micro Switch	2
9	6035	Conical Chassis	1
10	6082*	120v Printed Circuit Board	1
11	6083*	220v Printed Circuit Board	1
12	6037	On/Off Switch	1
13	6738-B*	Black On/Off Knob (ESP)	1
13	6738-W*	White On/Off Knob (ESP)	1
14	6142	Conical Grounds Bin Clear w/Fill Line	1
15	6021	Ballast for Encore/Virt/Virt+/Preciso	1
16	6745-B	Black Plastic Base (ESP)	1
16	6745-W	White Plastic Base (ESP)	1
17	F6121*	M3.5x11 Plastic Thread Cutting Screw	16
18	6049*	Rubber Foot	4
19	6713-B	Black Top Case (ESP)	1
19	6713-W	White Top Case (ESP)	1
20	6751-B	Black Rear Case (ESP)	1
20	6751-W	White Rear Case (ESP)	1
21	6752-B	Black Side Case (ESP)	1
21	6752-W	White Side Case (ESP)	1
22	F6120	M3 Hex Nut	2
23	F6122	M6-1.25x8 Machine Screw	2
Not Shown	6212*	Brush	1
Not Shown	6740*	Dosing Cup	1
Not Shown	6741*	58mm Dosing Cup Adapter Ring	1
Not Shown	6742*	Dosing Cup Base	1
Not Shown	6791*	ESP Shim Kit	1

** Frequently needed service parts

*Occasionally needed service parts

†Quantities in "Total Used" column are amounts in finished product, not per page

NOTE: No need to stock parts without asterisks



ENCORE ESP GRIND/MOTOR ASSEMBLY

Item Number	Part Number	Part Description	Total Used†
1	6768**	Ring Burr Holder (ESP)	1
2	6170*	M2 Ring Burr	1
3	6065*	Ring Burr O-Ring	1
4	6776	Metal Adjustment Ring (ESP)	1
5	F6787*	M2x6 Set Screw	1
6	F6786*	Set Screw Star Washer (ESP)	1
7	6777**	Calibration Ring (ESP)	1
8	6778	Quick Release Knob	1
9	N/A	Quick Release Knob Washer	1
10	6775	M2 Cone Burr (ESP)	1
11	6779	ESP Drive Shaft	1
12	6780**	Paddle Wheel (6763) W/Thin Felt (6781)	1
13	F8788	Metal Drive Shim	1
14	6032*	Micro Switch	2
15	6196*	Detent	1
16	6197	Detent Spring	1
17	F6085*	M10-16mmOD, 0.25mm Thick Washer Shim	3
18	F6784*	M10-16mmOD, 0.10mm Thick Washer Shim	4
19	6105*	Grommet Sleeve Assembly	3
20	6088	Ground Chute	1
21	6713	Conical Gearbox Housing (ESP)	1
22	6089	Ground Chute Gasket	1
23	F6785*	Wave Washer	1
24	6091**	Main Drive Gear	1
25	F6193	M8 Internal Tooth Star Lock Washer	1
26	F6192	M8 Hex Nut	1
27	F6189	M5x12 Machine Screw	2
28	6794*	Conical Motor Mounting Plate (w/Bushing, ESP)	1
29	F6121	M3.5x11 Plastic Thread Cutting Screw	16
30	6026**	120v Motor for Conical Grinders	1
31	6027**	220v Motor for Conical Grinders	1

** Frequently needed service parts

*Occasionally needed service parts

†Quantities in "Total Used" column are amounts in finished product, not per page

NOTE: No need to stock parts without asterisks